

## KAKHOVKA DAM FLOOD RESPONSE | SNAPSHOT | 06 JULY 2023

▶ On 6 June 2023, the dam of the Kakhovka Hydroelectric Power Plant in southern Ukraine was bombed, leading to the depletion of the Kakhovka Reservoir. The damage and subsequent flooding led to displacement and a rise in humanitarian needs, as private homes, businesses, and community infrastructure including water and sanitation systems suffered extensive damage.

### ▶ DONATIONS | FOR THE UKRAINE STATE EMERGENCY SERVICE

43 Boats and Engines 11 Motor pumps 2,000 Fire hoses

### ▶ NFI | NON-FOOD ITEMS

- 39,741** Individuals assisted
- 8,501** Household hygiene kits distributed
- 1,331** Kitchen sets distributed
- 2,347** Jerry-cans distributed
- 4,252** Mattresses distributed

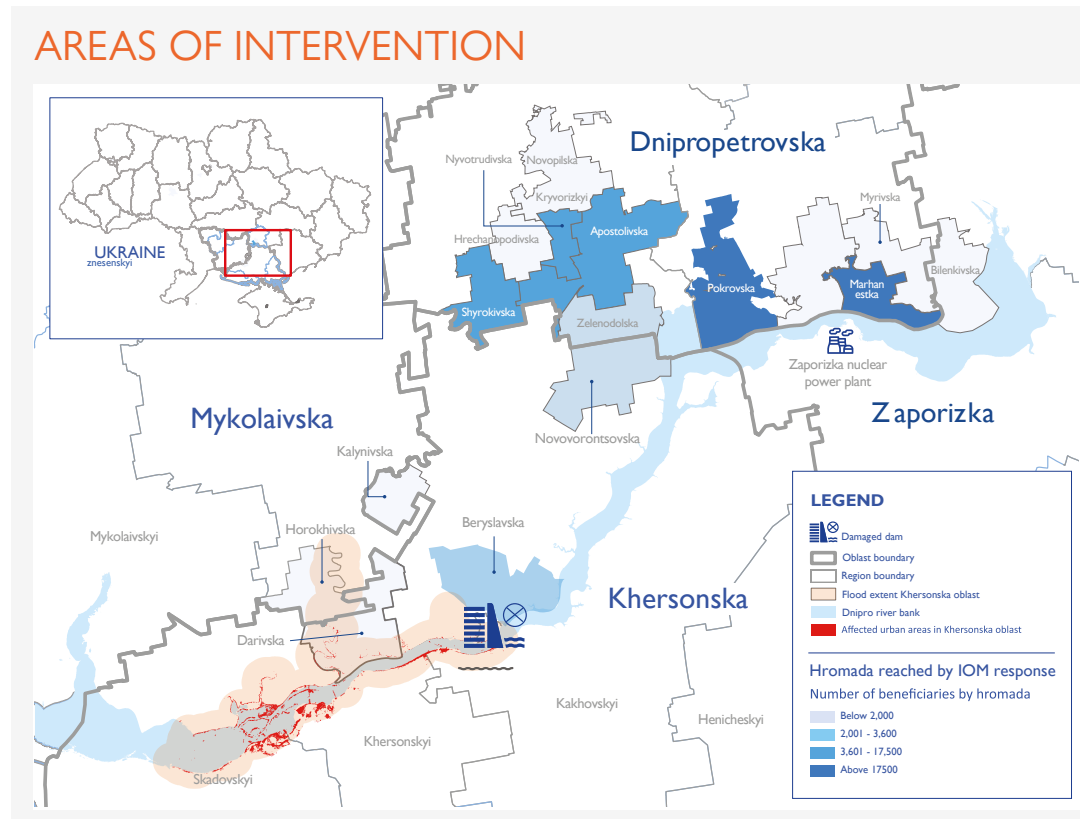
### ▶ SHELTER

- 1,350** Individuals assisted
- 8,501** Emergency shelter kits distributed

### ▶ CBI | CASH BASED INTERVENTIONS

- 562** Individuals payment process has been completed
- 40,000** People have been targeted to reach with cash-based interventions (CBI) with a blanket approach

### ▶ ER | EARLY RECOVERY soon to be started



### ▶ DTM | DISPLACEMENT TRACKING MATRIX

**3** Rapid needs assessment conducted following a collapse of the Kakhovka Hydroelectric Dam in the city of Nova Kakhovka in Ukraine's Khersonska Oblast, as a part of the inter-cluster humanitarian Rapid Response Plan (RRP)

### ▶ WASH | WATER, SANITATION & HYGIENE

- 158,311** People reached
- 120,000** Individuals benefiting from water points
- 5,300** Individuals benefited from bottled water distribution
- 58,000** Individuals benefiting from water trucking
- 12,900** Individuals benefited from Hygiene Kit distribution

### ▶ HEALTH

- 1,196** Medical items provided to the local health facilities
- 5,032** Medical items have been prepositioned to respond to waterborne disease/ cholera outbreaks
- 574** IEC materials distributed

### ▶ MHPSS | MENTAL HEALTH & PSYCHOSOCIAL SUPPORT

- 32** Individuals provided with awareness raising sessions "psychological support in times of crisis"
- 39** Individuals supported with peer support groups